

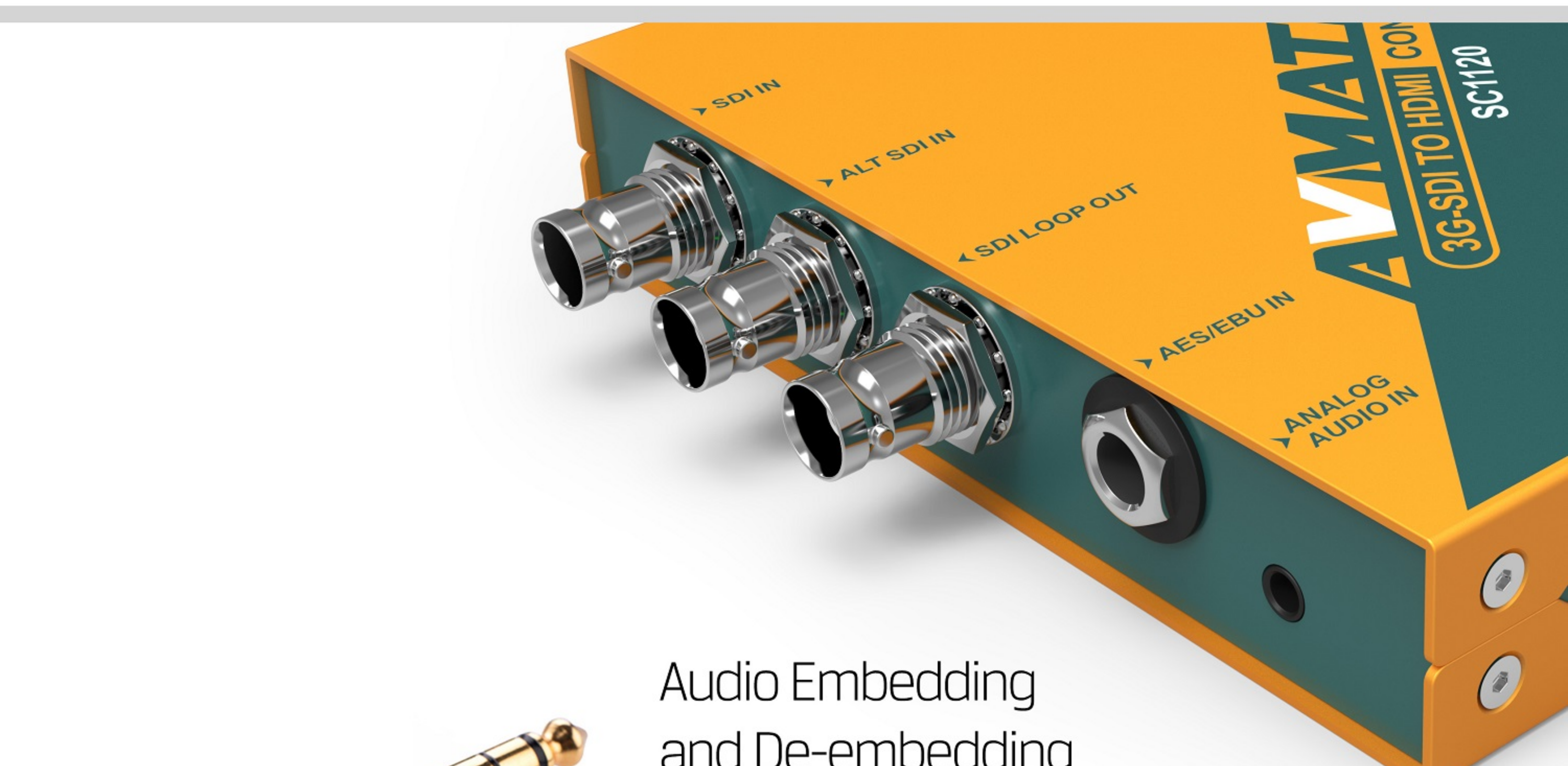
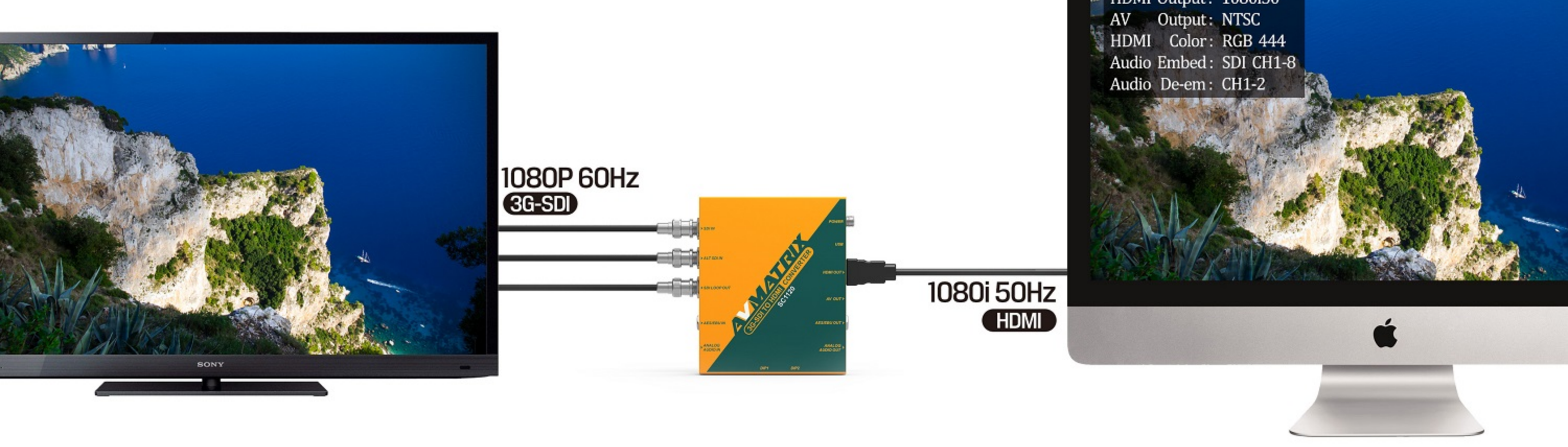


Model NO: SC1120 3G-SDI TO HDMI SCALING CONVERTER

- ▶ Input: 3G-SDI×1, Alt 3G-SDI×1, AES/EBU×1, analog audio×1
- ▶ Output: 3G-SDI loop×1, HDMI×1, AV×1, AES/EBU×1, analog audio×1
- ▶ Up/down scaling and frame rate conversion
- ▶ AES/EBU or analog audio Embedding & De-embedding
- ▶ Input signal automatic detection and configuration
- ▶ LED indicators for power and signal lock
- ▶ Control easily via the DIP switches
- ▶ Remote control for PC via USB
- ▶ Threaded locking power connector
- ▶ Detachable bracket design for wall mounting

Scaling & Seamless

SC1120 features converting SDI signal to HDMI and AV signals at the same time. And the format of output can realize pass through or up/down scaling and frame rate conversion. Besides, De-interlacing function and seamless conversion can also be supported to avoid jitter. It can support up to 1080p 60Hz.



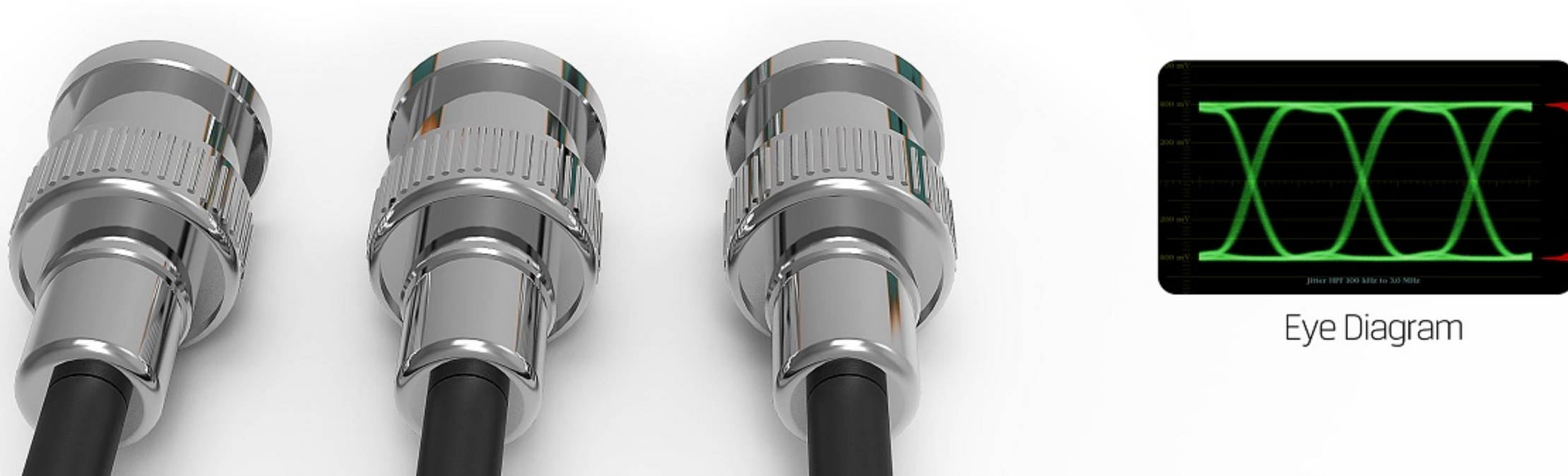
Audio Embedding and De-embedding

It features embedding an external AES/EBU or analog audio or SDI embedded audio to HDMI output. Also it can de-embedding audio from SDI input signal to external AES/EBU and analog audio. There is no need for users to purchase custom cables when adopting standard 1/4"(6.3mm) TRS audio jack and 1/8"(3.5mm) audio jack.



Redundant SDI Input & Re-clocked Output

The Alt SDI In for input redundancy, so the converter can auto switch to the redundant SDI input to avoid the loss of video signal in case of an accident. Therefore, it's a significant solution, and especially suitable for studio, live show or outdoor live events. Meanwhile, re-clocked SDI output ensure a long distance transmission without loss of signal quality.



DIP 1 (1=ON, 0=OFF)				DIP 2 (1=ON, 0=OFF)			
HDMI Output	SW1	SW2	SW3 SW4	Audio De-Embedding	SW5	SW6	SW7
Follow Input	1	1	1 1	SDI CH1-2	1	1	1
1080p60	1	1	1 0	SDI CH3-4	1	1	0
1080p50	1	1	0 1	SDI CH5-6	1	0	1
1080p30	1	1	0 0	SDI CH7-8	1	0	0
1080p25	1	0	1 1	SDI CH9-10	0	1	1
1080p24	1	0	1 0	SDI CH11-12	0	1	0
1080i60	1	0	0 1	SDI CH13-14	0	0	1
1080i50	1	0	0 0	SDI CH15-16	0	0	0
720p60	0	1	1 1	HDMI Audio Embedding SW8 SW9			
720p50	0	1	1 0	SDI CH1-8	1	1	
720p30	0	1	0 1	SDI CH9-16	1	0	
720p25	0	1	0 0	AES/EBU	0	1	
720p24	0	0	1 1	Analog	0	0	
576i50	0	0	1 0	HDMI Color Space SW10 SW11			
480i60	0	0	0 1	RGB 444	1	1	
576i60 Cut	0	0	0 0	YUV 422	1	0	
				YUV 444	0	1	
				DVI RGB 444	0	0	



Easy Control over DIP Switches

Adjusting the DIP switches to set the functions by finger. It's a smart method to change common settings quickly when outdoor applications. Meanwhile, it also can be remote set by using a software by connecting it with a PC via USB. Besides, the latest software can be upgrades by connecting it with a PC via the USB.

Technical specification

INPUT	SDI Video Input	SD/HD/3G-SDI ×1, Alt 3G-SDI ×1
	AES/EBU Digital Audio Input	1/4" (6.35mm) TRS jack ×1
	Analog Audio Input	1/8" (3.5mm) jack ×1
OUTPUT	HDMI Video Output	HDMI type A ×1
	AV Output	1/8" (3.5mm) jack ×1
	SDI Video Loop Output	SD/HD/3G-SDI ×1
FORMATS	AES/EBU Digital Audio Output	1/4" (6.35mm) TRS jack ×1
	Analog Audio Output	1/8" (3.5mm) jack ×1
	SDI Input Format Support	1080p 60/59.94/50/30/29.97/25/24/23.98 1080p50F 30/29.97/25/24/23.98 1080i 60/59.94/50/30/29.97/25/24/23.98 720p 60/59.94/50/30/29.97/25/24/23.98 625i 50, 525i 59.94
SIZE	SDI Video Rate	SD/HD/3G-SDI
	SDI Compliance	SMPTE 292M/SMPTE 259M/SMPTE 424M
	SDI Color Space and Precision	YUV 4:2:2
POWER	SDI Auto Switching	Auto selects SD, HD and 3G-SDI on input
	HDMI Output Format Support	1080p 60/50/30/25/24 1080i 60/50 720p 60/50/30/25/24 576i 50, 480i 60
	HDMI Color Space and Precision	YUV 4:2:2, YUV 4:4:4, RGB 4:4:4
ENVIRONMENT	AV Output Format Support	NTSC, PAL
	Dimension (LWD)	125.5mm × 104mm × 24.5mm
	Weight	465g
WARRANTY	Power Connector	Threaded locking connector
	Power Consumption	6W
	Voltage Range	DC 12V
ENVIRONMENT	Operating Temperature	-20°C~60°C
	Storage Temperature	-30°C~70°C
	Relative Humidity	0%~90% non-condensing
WARRANTY	Warranty	3 year limited warranty

